

**INSTRUMENT APPROACH CHART**  
Categories A-B-C

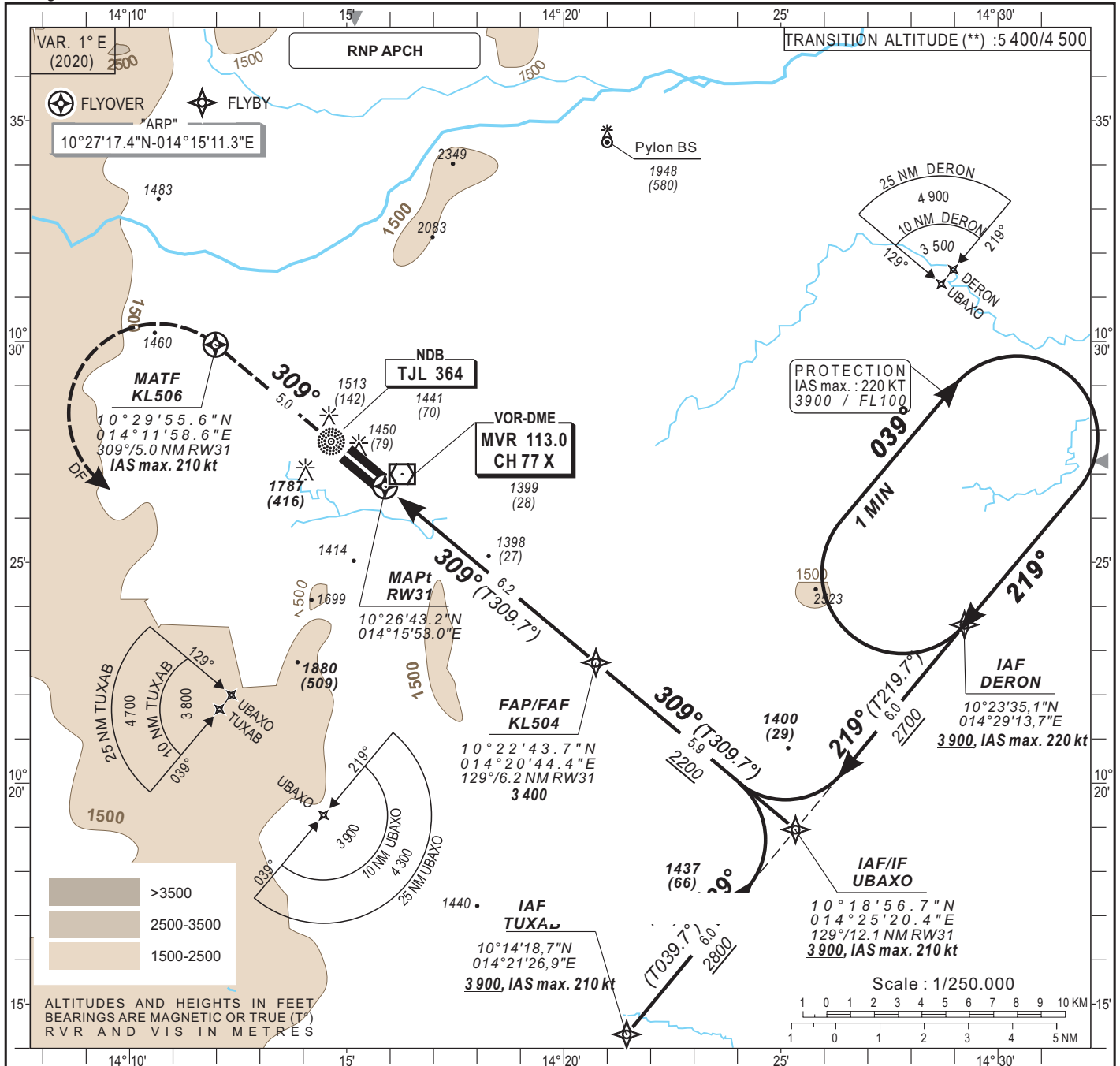
ELEV. : 1391  
THR : 1371

Maroua Tower : 118.9

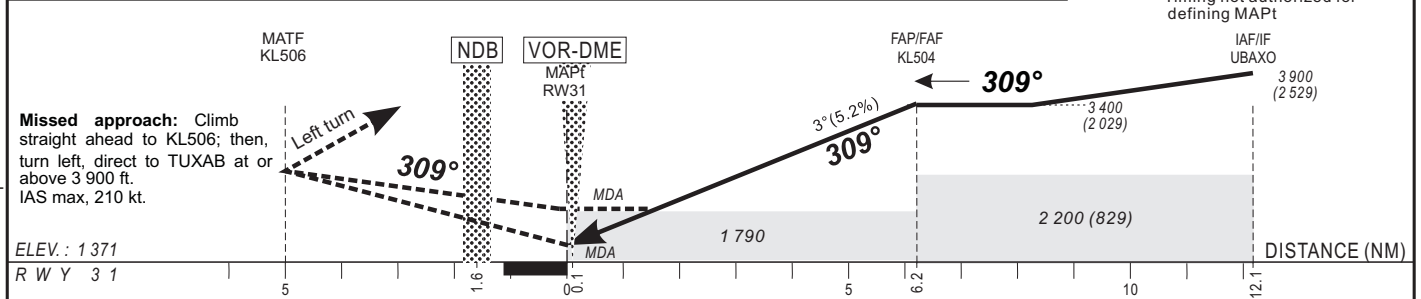
**MAROUA - Salak (FKKL)**

HEIGHTS RELATED TO THRESHOLD 31 ELEVATION

RNP RWY 31



Distance to RW31 (NM)	FAP/FAF		6	5	4	3	2	1	Notes : - RDH : 15 m - Minimum temperature : 10°C - Timing not authorized for defining MAPt
Altitude (ft)	3 400		3 330	3 020	2 700	2 380	2 060	1 740	



ELEV. : 1371  
R W Y 3 1

OCA(OCH)	A	B	C	D	Ground speed (kt)	kt	90	100	120	140	160	180
LNAV/VNAV	1650(280)	1661(290)	1681(310)		Rate of descent (ft/min)	ft/min	475	525	630	740	840	-
LNAV	1790(420)				Timing FAF-MAPt 6.1 NM	min:sec	4:04	3:40	3:03	2:37	2:17	-
CIRCLING*	2082(691)	2082(691)	2372(981)									

Timing not authorized for defining MAPt (LNAV).  
(\*) Heights related to aerodrome elevation.  
For data tabulation, see verso.

(\*\*) Transition altitude: 5400 ft from QDM 058° to 228° and 4 500 ft from QDM 228° to 058°

CHANGES : New edition- Magnetic variation updated.